

# *hana*

HANATECH ENDÜSTRİYEL SAN. VE TİC. A.Ş.

*Combustion Technologies*



YOUR  
RELIABLE  
COMPONENT  
PARTNER

HEAT CELL M, B

The Correct **CHOICE**

Table of Contents

About Hanatech.....

1

Premix Heat Exchanger.....

2-3

Burner Door.....

4-5

Silencer.....

6

Mixer.....

7

Trap.....

8

Non-Condensing Heat Exchanger.....

9

Hanatech, founded in 2020, is a member of Irea Group companies, which has a 30 + years of experience in HVAC sector. Hanatech specializes in production & supply of components for various kinds of heating and cooling devices.

Due to its flexible production capabilities and qualified ecosystem, both metal and plastic components are available in its product range.

Hanatech is a fast and flexible company, as well as providing its standard products, it is possible to produce in-house designed ones, according to customers special needs.

Hanatech has secured its position in the market as a reliable partner for many customers in a wide geography with its R&D facilities, quality systems and production capability.

Our brand Hana expresses our core mission and values, as



## HEAT:

We are an expert on heating technology and systems. We design and produce to create more efficient combustion technologies

## AIR:

Air flow control is critical in HVAC products. We design and produce to create a perfect combination of air and fuel. It is also our mission to provide components for HVAC products to efficiently regulate their temperature in living spaces

## NATURE:

Our products and production facilities are designed to be more eco-friendly. We thrive to keep a sustainable world

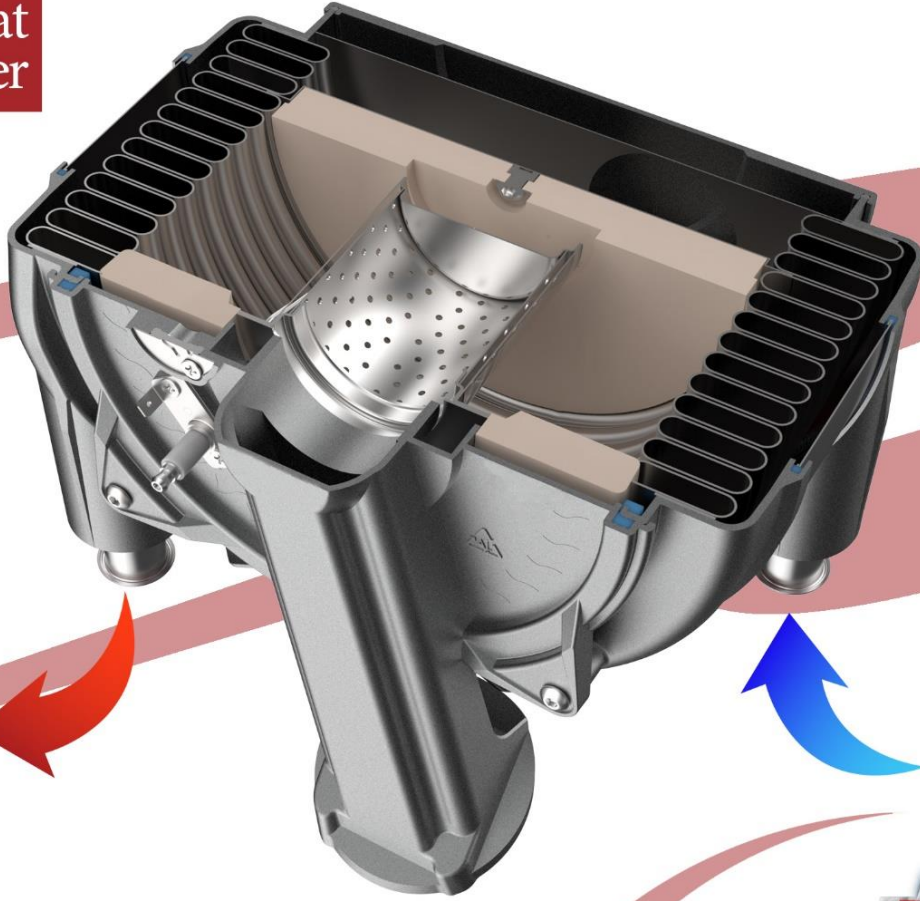
## AQUA:

Water is one of the main inputs of our industry and a critical source for our world. Our products are designed to heat and use water in the most efficient way

**SOLUTION**  
INSIDE THE NATURE



## Premix Heat Exchanger



### Robustness

Mono coil system ensures a robust heat transfer and low resistance

### High Efficiency

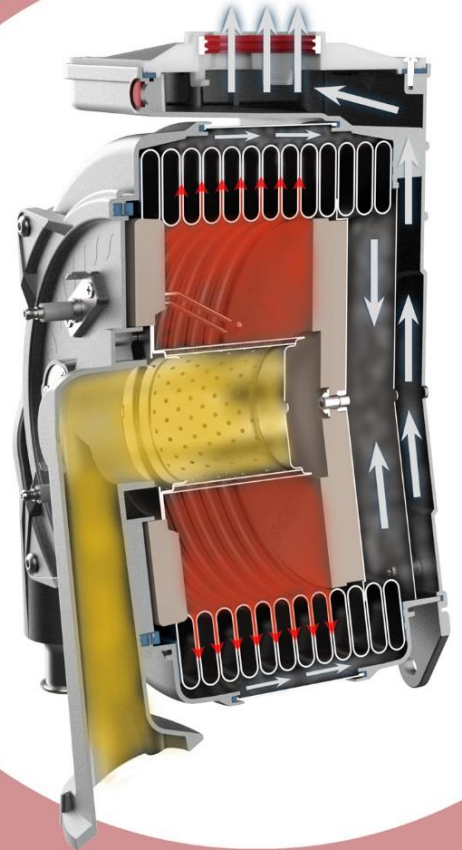
Double combustion room creates the maximum heat transfer

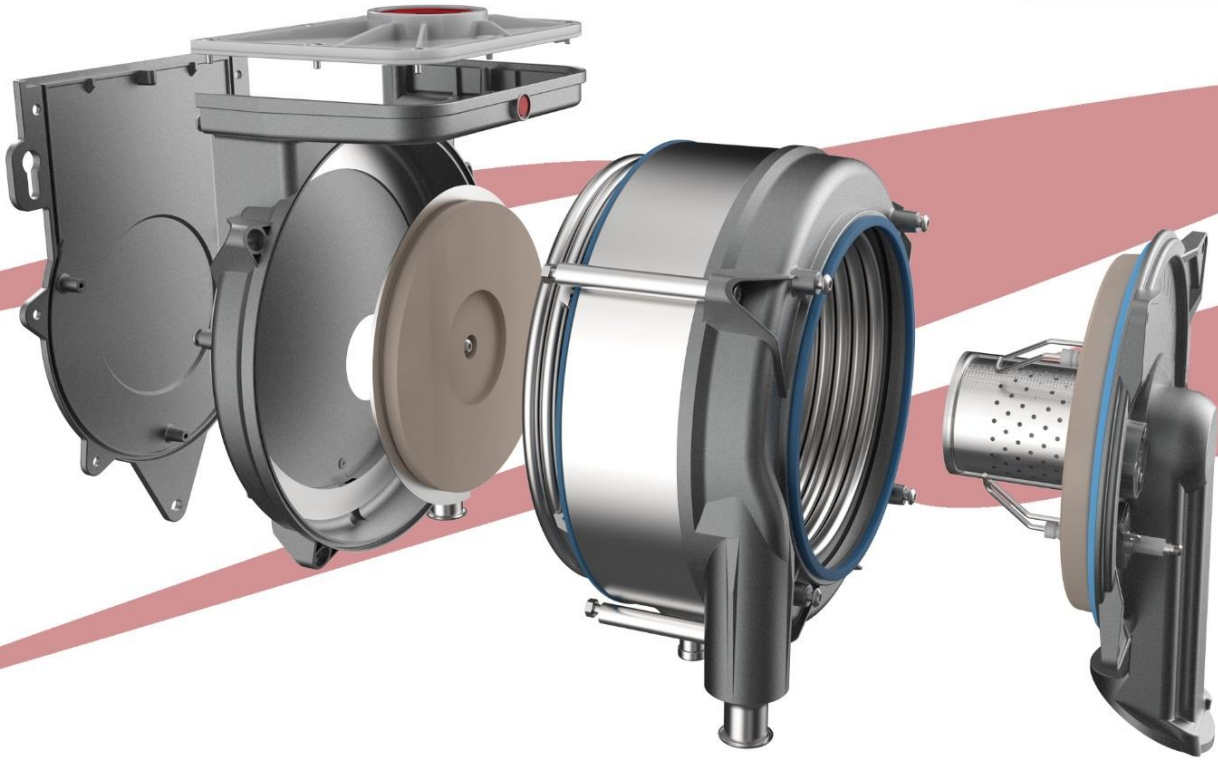
### Serviceability

Front and back covers ease of reach inside for cleaning and service

### Flexibility

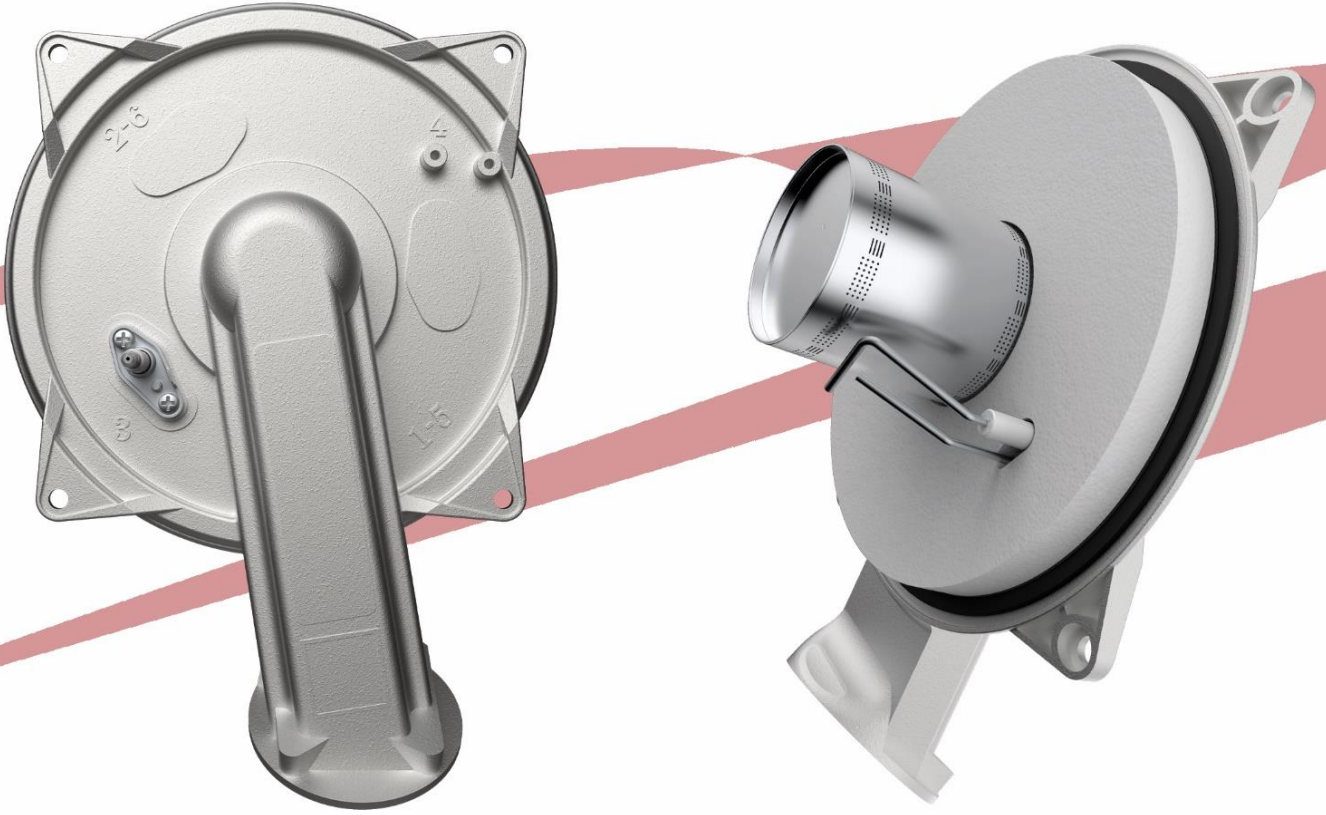
Construction allows to all replacements. Seperate top cover allows to assemble any customized boiler structure





Model	Heat Core M24	Heat Core M30
Central Heating (kW)	24-25	30
Domestic Hot Water (kW)	28-30	35
Dimensions - W x D x H (mm)	287 x 225 x 378	287 x 236 x 378
Water Connections	3/4" Rapid	3/4" Rapid
Water Connection Axes	226	226
Flue Outlet	60	60
Options	Right-middle-left 80	Right-middle-left 80

## Burner Door



## INCREASED PERFORMANCE WITH NEW DESIGN

### Efficiency

Specially designed air channel allows fluent air suction and insulation technique together with design causes heat to stay inside, outside temperature is kept at minimum, thus better performance overall

### Assembly - Flexibility

Adaptable design for different heat exchangers, burners and blowers. Wide capacity range. Silencer can be fixed on it. 2 electrode option.

### Quality

More than 200.000 production without quality problems. Strength Etial 160 aluminum material.

### Security

Faulted burning detection system. Robust sealing with ceramic and graphite gaskets.



## Burner Door



Burner Door 23-35



Burner Door 42



Burner Door 65

Technical Features	Unit	Burner Door 25-35	Burner Door 42	Burner Door 65
Burner Type	-	standard/gas adaptive	standard/gas adaptive	standard/gas adaptive
Burner Dimension	mm	79	110	135/157
Suitable Heat Exchanger	coil number	10,5-11,5-13,5	15,5	16,5/18,5
Heat Exchanger Capacity	kW	20-25-35	42	60/65

## Silencer



Model 1



Model 2

## DIFFERENT MODELS SUITABLE FOR ALL NEEDS

Silencer is the essential component to decrease noise level in boiler operation



Model 3

### Efficiency

It provides air suction over the manifold with its special design; in this way, the efficiency is increased by allowing the air coming from the outside to reach the temperature of the combustion chamber fast

### Silence

With its area that allows air to rest inside, the noise in direct suction moments is reduced (Model 1, Model 2)

### Safety

With the clamp joint system used, the safety increased and service problems prevented

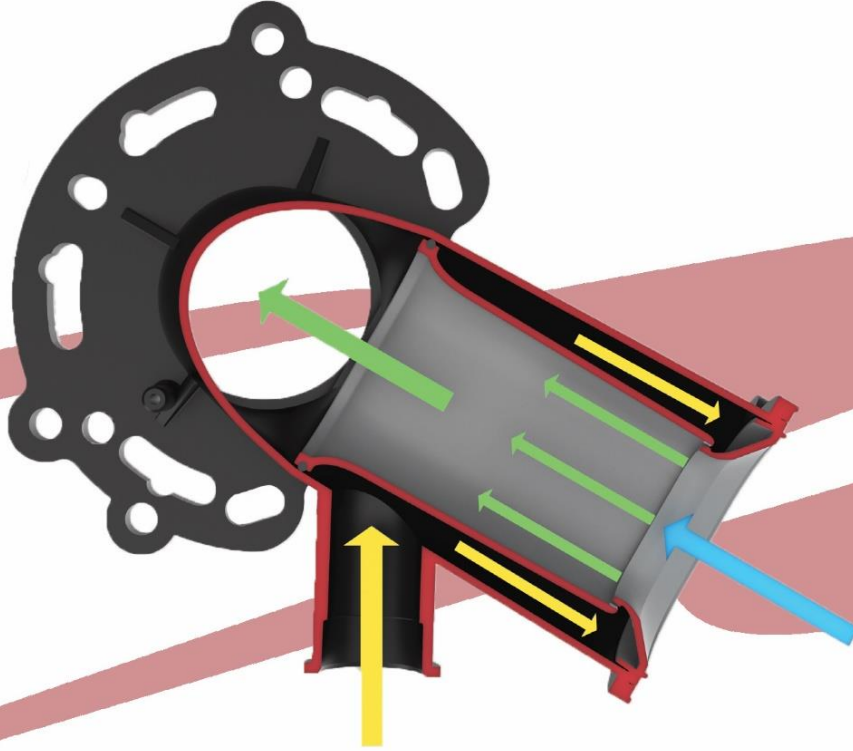
### Performance

Allows gas-air modulation when used with mixer, designed according to emission values

### Design

With its compact design, it occupies minimum space inside the device (Model 3)





## NEW DESIGN WITH **INCREASED EFFICIENCY**

Mixers are essential components of boilers for the efficient combination of air and gas

### Efficiency

Flow analysis and life tests have shown that the new design provides sufficient air-gas mixture at different gas flow rates. Ideal air-gas mixture point for efficient combustion is achieved

### Flexibility

The design has various screw holes, making it easy to mount to different fan models.

### Assembly

Design is suitable to use with different screws and clips

### Compact design

The new design has compact dimensions, thus space saving inside the boiler

### Serviceability

Design assures high serviceability and eases assembly

## Trap



### A NEW DESIGN FOR BETTER PERFORMANCE

Traps are an essential component in condensing heating devices, to collect the condensation and help to remove from the system

#### Easy to assemble & service

Due to its compact design, no additional parts are required, thus ease of assembly is achieved and possible service errors are prevented

#### Control and Safety

The amount of water inside can be controlled by the main board of the device via sensor connections, available to be placed at the inlet. The assembly area has been separated, thus preventing any mistakes during service

#### No sweeping effect

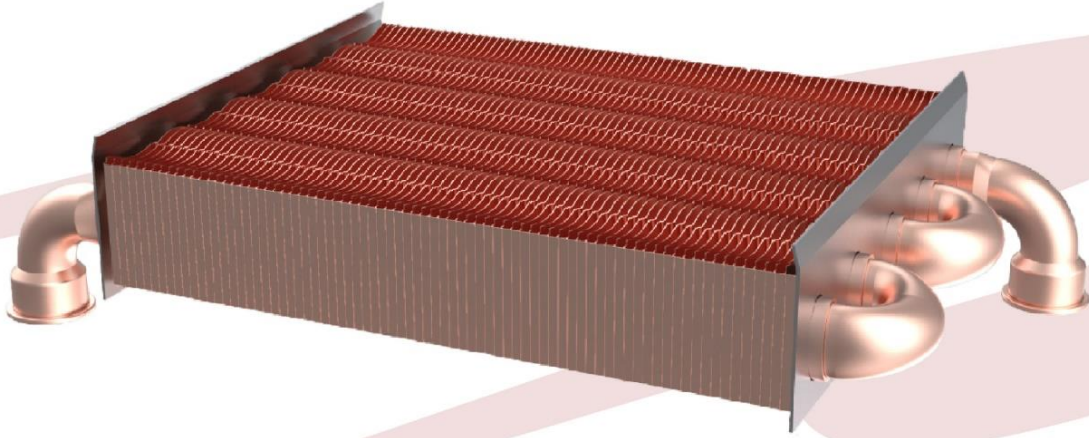
The accumulation zone, opposite to gas flow movement, prevents sweeping effect

#### No gas leakage

The insulated waterway, increases resistance, thus preventing possible gas leakages

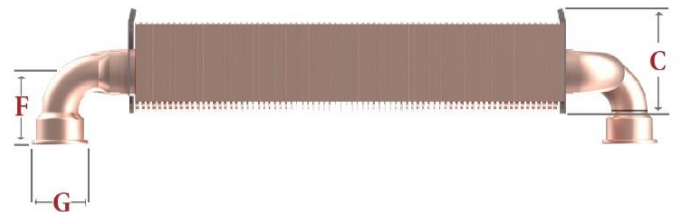
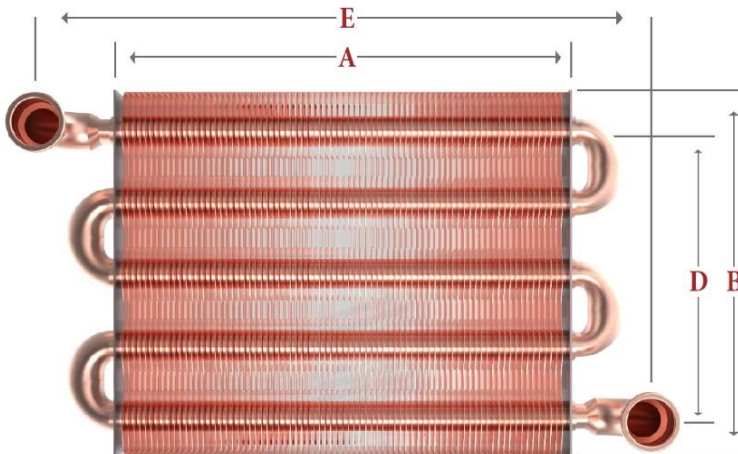
#### No drain blockage

The wider waterways, prevents blockage of condensation drainage, by any sediment or solid wastes coming from upper parts of combustion area or external chimney area. No floats are used, which also has a risk of blockage



## HIGH QUALITY NON-CONDENSING HEAT EXCHANGERS ALUMINUM PAINTED

Dimensions	24 kW Heat Exchanger	28 kW Heat Exchanger	32 kW Heat Exchanger
A	225 mm	260 mm	290 mm
B	180 mm	180 mm	180 mm
C	54 mm	54 mm	54 mm
D	144 mm	144 mm	144 mm
E	295 mm	330 mm	380 mm
F	37 mm	37 mm	37 mm
G	22,6 mm	22,6 mm	22,6 mm





# *hana*

HANATECH ENDÜSTRİYEL SAN. VE TİC. A.Ş.  
*Combustion Technologies*

website:  
[www.hanatech.com.tr](http://www.hanatech.com.tr)



26. Street 5th Building 26250  
Organised Industrial Zone  
ESKİŞEHİR /TÜRKİYE  
[info@hanatech.com.tr](mailto:info@hanatech.com.tr)